



# Simplify Volt RoboCar Disruption and Tech ETF

VCAR | NYSE Arca, Inc.

Annual Shareholder Report | June 30, 2024

This annual shareholder report contains important information about Simplify Volt RoboCar Disruption and Tech ETF ("VCAR" or the "Fund") for the period of July 1, 2023 to June 30, 2024. You can find additional information about the Fund at [www.simplify.us/resources](http://www.simplify.us/resources). You can also request this information by contacting us at (855) 772-8488.

## What were the Fund's costs for the period?

(based on a hypothetical \$10,000 investment)

Fund	Costs of a \$10,000 investment	Costs paid as a percentage of a \$10,000 investment
Simplify Volt RoboCar Disruption and Tech ETF	\$106	0.95%

## Management's Discussion of Fund Performance

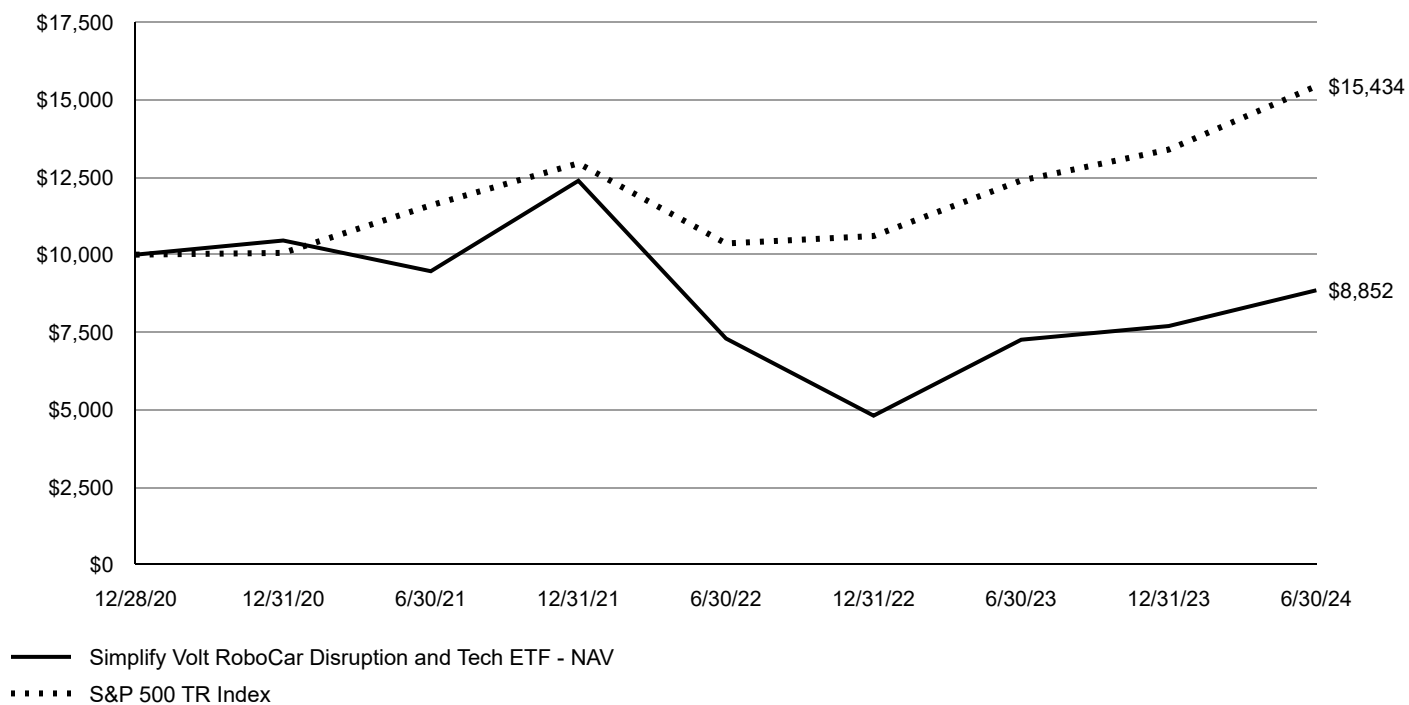
For the year ended June 30, 2024, VCAR returned 21.96% vs its referenced benchmark, S&P 500 Index, return of 24.56%, underperforming the benchmark by 2.60%.

VCAR performed well alongside the broader market despite experiencing a downward drag due to significant exposure to Tesla. This was mitigated by substantial exposure to NVIDIA (NVDA), which greatly benefited from the rise of artificial intelligence (AI) technologies. The strategic positioning in NVDA helped buoy the Fund's performance.

Looking forward, we believe there will continue to be strong tailwinds for VCAR and the autonomous driving space, and we continue to be optimistic about Tesla in particular. The advancements in AI are poised to have a transformative impact on society, and we remain optimistic about the Fund's future performance given its focus on robocar and tech names at the forefront of this technological evolution.

## Fund Performance

### Growth of an Assumed \$10,000 Investment



AVERAGE ANNUAL TOTAL RETURN Fund/Index	1 Year	Since Inception 12/28/2020
Simplify Volt RoboCar Disruption and Tech ETF - NAV	21.96%	-3.42%
Simplify Volt RoboCar Disruption and Tech ETF - Market	22.68%	-3.22%
S&P 500 TR Index	24.56%	13.18%

**The Fund's past performance is not a good predictor of future performance. The graph and table do not reflect deduction of taxes that a shareholder would pay on Fund distributions or redemption of Fund shares.**

## Key Fund Statistics

The following table outlines key fund statistics that you should pay attention to.

Fund net assets	\$5,513,452
Total number of portfolio holdings	81
Total advisory fee paid, net of waiver	\$44,271
Period portfolio turnover rate	19%

## Graphical Representation of Holdings

The table below shows the types of investments that make up the Fund as of the end of the reporting period.

Investment Categories	% of Net Assets
Common Stocks	93.7%
Purchased Options	2.7%
Money Market Funds	3.8%
Liabilities in Excess of Other Assets	(0.2)%
Total	100.0%

## Availability of Additional Information

You can find additional information about the Fund such as the prospectus, financial information, fund holdings and proxy voting at the website address or contact number included at the beginning of this shareholder report.

**Distributed by Foreside Financial Services, LLC.**